

Environmental Effects Statement

Introduction:

This Environmental Effects Statement (EES) assesses the likely impacts of the proposed development of a coffee house within Holbrook, focusing on environmental considerations during and after development. The proposed development aims to provide high-quality coffee sourced locally, served in eco-friendly cups, and accompanied by fresh milk delivery. The statement evaluates potential impacts and proposes mitigation measures to address these concerns, aligning with relevant policies and planning controls.

Likely Impacts:

Resource Utilization:

During Development: Construction activities may lead to increased resource utilization, including water, energy, and materials, contributing to temporary environmental strain.

After Development: Ongoing operation of the coffee window may result in continuous resource consumption, particularly energy for coffee machine, grinder, extra fridge and water usage for cleaning.

Waste Generation:

During Development: Construction activities may generate waste materials, such as packaging, debris, and excess materials, contributing to temporary waste accumulation.

After Development: Operational activities may produce waste, primarily from disposable coffee cups and packaging, potentially exacerbating landfill burden and environmental pollution.

Traffic and Noise:

During Development: Construction-related traffic and noise may disrupt local businesses, leading to temporary inconvenience and potential disturbance. This will only be mild as they are removing the old window and replacing it with a new one.

After Development: Increased foot traffic and vehicle movements associated with the coffee window. While customers are waiting for their coffee they might browse within nearby shops.

Resource Management:

Implement energy-efficient equipment and practices to minimize energy consumption during coffee preparation and operational activities.

Adopt water-saving measures, such as efficient fixtures and regular maintenance, to reduce water usage and wastage. Implementing a grease trap as well under the counter prevent grease and food waste from clogging up the waster pipes.

Waste Reduction and Recycling:

Utilize eco-friendly coffee cups and packaging materials to minimize environmental impact.

Implement waste segregation and recycling programs to reduce landfill burden and promote sustainable waste management practices. The coffee grounds can also be used as a exfoliator reducing environmental impact.

Traffic and Noise Management:

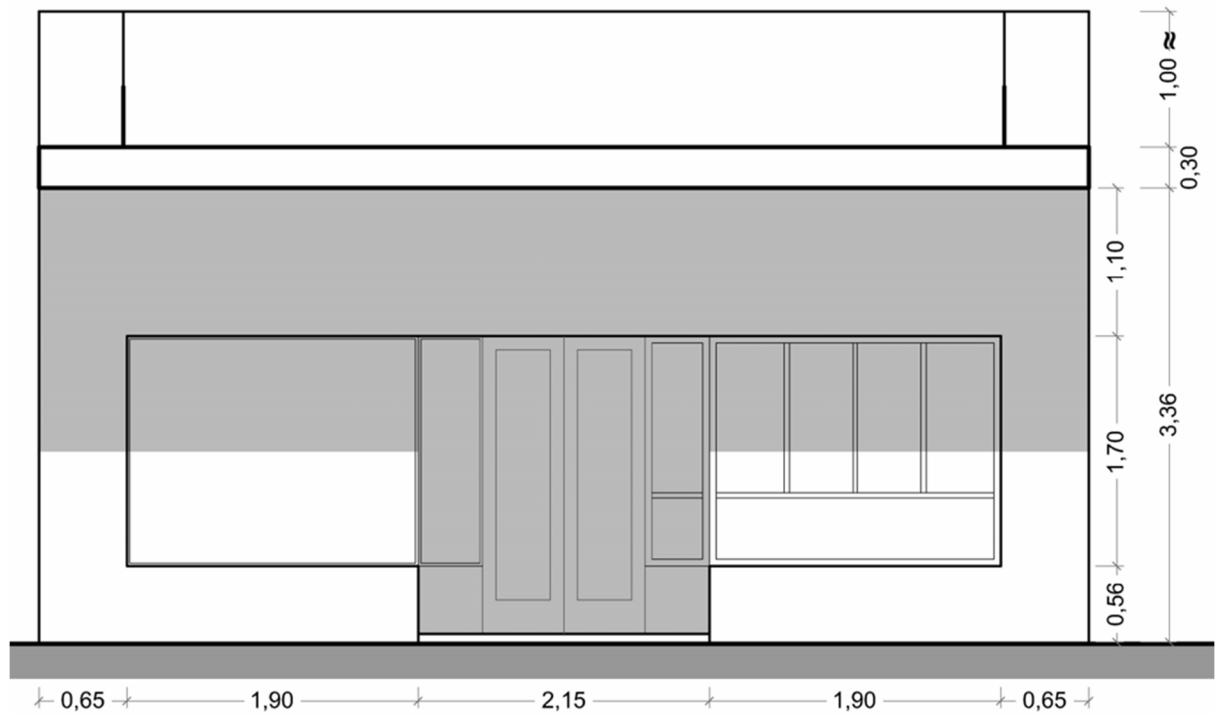
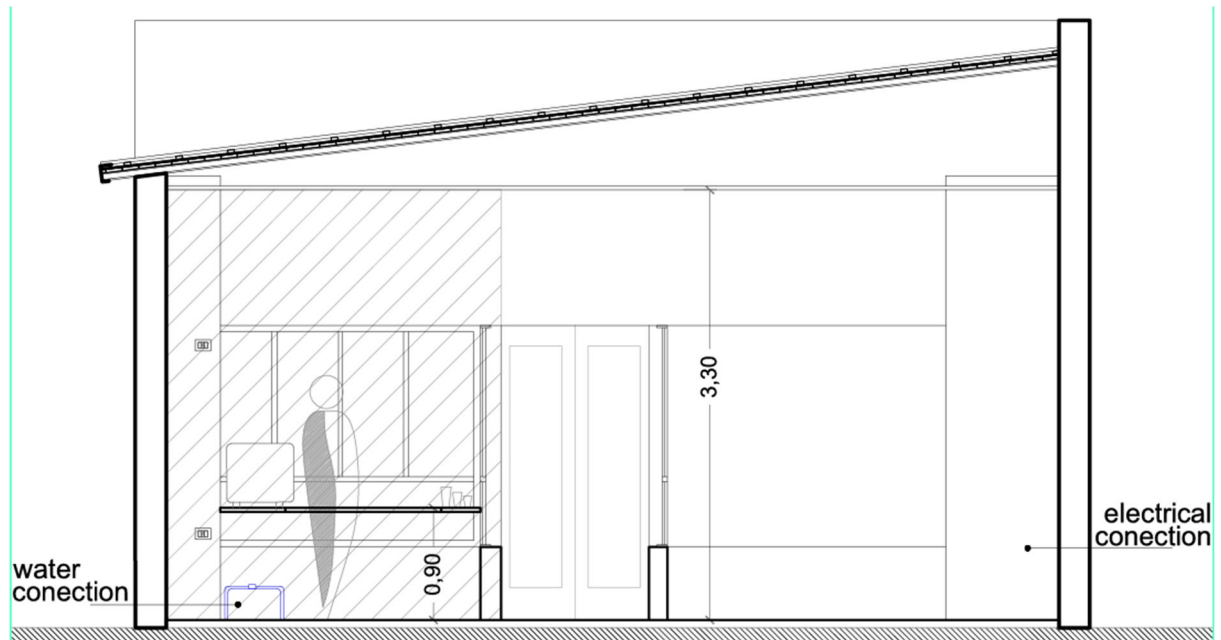
Coordinate construction activities to minimize disruption to local residents and businesses, including scheduling work during off-peak hours and implementing noise mitigation measures.

Policy and Planning Controls:

The proposed development aligns with relevant policies and planning controls, including local zoning regulations, environmental protection guidelines, and sustainability objectives. By adhering to these provisions and implementing appropriate mitigation measures, the development aims to minimize environmental impact and promote sustainable development practices.

Conclusion:

The Environmental Effects Statement highlights the potential environmental impacts of the proposed coffee house development and outlines measures to mitigate these effects. By incorporating resource-efficient practices, waste reduction strategies, biodiversity conservation efforts, and traffic and noise management measures, the development seeks to minimize its environmental footprint and contribute to sustainable development within the community.





Cup of Soul, is an example of the vision we have in mind, however our window will only include 3 sliding panals.